

alpe*huez
PRESS KIT

L'ALPE D'HUEZ MORE THAN A SKI RESORT A MOUNTAIN OF PLEASURE

WINTER 2026

TABLE OF CONTENTS



TOP 10 STRENGTHS OF THE SKI RESORT

Page 3-4



THE 4 GREAT SKI ADVENTURES

Page 5-7



A PERFECT AREA FOR BEGINNERS

Page 8



THE JOY OF SKIING BEYOND BARRIERS

Page 9-11



TOP 5 SNOW ACTIVITIES WITHOUT SKIING

Page 12



DISCOVER THE HISTORY OF THE SKI RESORT

Page 13-14



A THRILL OF ADRENALINE

Page 15



RELAX MAX

Page 16-17



CAPRICIOUS WEATHER? NO PROBLEM!

Page 18-20



SEEKING SILENCE

Page 21



ACT TODAY FOR TOMORROW

Page 22-24



AGENDA

Page 25



Join our photo library !

Click [HERE](#)

TOP 10 STRENGTHS OF THE SKI RESORT



1 A progressive area, easy to understand and clearly visible.

The higher you go in altitude, the more difficult and technical the slopes become! Beginners stay safely near the resort, while intermediates and experts enjoy terrain suited perfectly to their level.

2 Easy slopes for beginners, accessible from the ski front.

Perfect for a smooth start on the slopes, 36 green and 29 blue runs are easily reached by lifts from the resort. Three are free to enjoy!



3 3 fun-filled runs add excitement to the ski area:

Discover La Marcel's Farm charmingly decked out in pink from the Signal summit, follow Roger le Berger, Jacques le Bûcheron, and finish with Léo, guiding you from the 1800 snowfront to the tourist office.

4 Enjoy long runs and great vertical drops for hours of skiing

You can ski for up to one hour without taking a lift, with 4 routes offering vertical drops from 1,000 to over 1,800 meters. The area includes 16 black runs, featuring legendary itineraries such as the 16 km long Sarenne slope, and the Tunnel slope, which goes through the mountain from side to side.

5 A vast and diverse ski resort

The connected resorts retain the traditional charm of mountain villages. Each sector offers a different atmosphere: glaciers, fir trees, gorges, wide open spaces, frozen lakes, and vast landscapes.

6

The snowpark des Jeux

Rails, spins, and other sequences of tricks are on offer in a snowpark spanning over 50 acres, one of the largest in the Alps! With a south-facing exposure and privileged access from the 1800 snowfront of the Grandes Rousses sector, the Snowpark des Jeux caters to all levels, from beginner to expert, including intermediate skiers.



7

Ski-in return guaranteed throughout the season.

Snow cannons of strategic points through the ski area ensure ski-in / ski-out access until late April !



10

Fifty kilometers of cross-country skiing

Alpe d'Huez loves cross-country skiers and doesn't forget them: whether skating or classic style, the 50 km of cross-country trails offer a varied area for all levels, including the Brandes loop (6 km), the Poutran loop (10 km), and the Rochette loop (8 km).

8

Pic Blanc: a 360° panorama that will take your breath away

The highlight of the ski area is undoubtedly the panorama from Pic Blanc, which reaches 3,330 meters in altitude and is accessible via the Pic Blanc cable car. Rated three stars in the Michelin Green Guide, it offers an exceptional view. On a clear day, you can see Mont Ventoux, Taillefer, Belledonne, the Chartreuse, La Meije, La Muzelle, as well as Mont Blanc and the Aiguilles d'Arves.

9

An exceptional off-piste Area

The off-piste area is one of the largest and most varied in the French Alps, with over 70 routes! From steep-slope enthusiasts to lovers of long ski tours, the mountain guides of Alpe d'Huez offer outings suited to everyone's level and preferences.

THE 4 GREAT SKI ADVENTURES

Alpe d'Huez is exceptional with its large vertical drops, allowing long runs without using a lift. We have four major routes, which together total over 5,800 meters of vertical descent.

With Sarenne, 16 km of nonstop descent

If dawn reveals Pic Blanc and Sarenne in all their majesty, the legendary slope offers a memorable experience at any time of day. Exclusive access via the Pic Blanc cable car opens this grand skiing session with an exceptional panorama, as noted by Pauline Zini-Smith, municipal councillor responsible for tourism: 'From the summit, the view is superb over La Meije, Le Râteau, and Plateau d'Emparis. For me, it's the most beautiful spot to admire the Aiguilles d'Arves.'

"The first run is a bit intimidating, but Sarenne soon becomes smooth and very enjoyable"

While the descent starts with a steep section, reserved for experienced skiers, the rest of the route is less challenging. 'The first run is a bit intimidating, but Sarenne soon becomes smooth and very enjoyable,' adds Pauline Zini-Smith. Soon, the trail moves away from the lifts, offering a peaceful haven where silence reigns.



The slope winds between rocks in a wild setting, both in sun thanks to its south-facing orientation. 'The final little run along the Sarenne river is a nice moment of relaxation after working your legs!' rejoices Pauline Zini-Smith.

Yes, your legs really get a workout! With over 16 kilometers of continuous descent, punctuated by a few steep sections, Sarenne jealously maintains its legendary status: its record length makes it a true world-famous myth.

Starting altitude:
3 330 m
Arrival altitude:
1 510 m
Vertical drop: 1 820 m
(up to Alpauris)



A Bit of History:

Long favored as an off-piste route by experienced skiers, Sarenne officially became a marked and secured slope on January 30, 1977. Georges Rajon, the inventor of the 21 numbered turns of Alpe d'Huez and CEO of SATA in the 1970s, issued a year earlier a challenge to Christian Reverbel, the ski area manager: to transform the Sarenne off-piste into a groomed run.

However, the board of directors was skeptical, and Georges Rajon enlisted Félix Germain, founder of mountain rescue, to support his request. With Germain's approval, the project was given a go and work began. The legend was born a few months later...and continues to inspire skiers from around the world!"

Sarenne: making first tracks like a ski officer



Every Wednesday, the first rays of sunlight on the legendary Sarenne slope are ideal for an early descent, even before the official opening of the pistes. The only rule: be first and enjoy making the first tracks! This special moment is guided by mountain professionals who introduce participants to their work, their environment, and their morning routine. After a moment of contemplation at 3,330 meters, the descent begins. At the bottom of the slope, a stop at the Auberge de la Combe Haute allows for a tasty break before a full day of skiing.

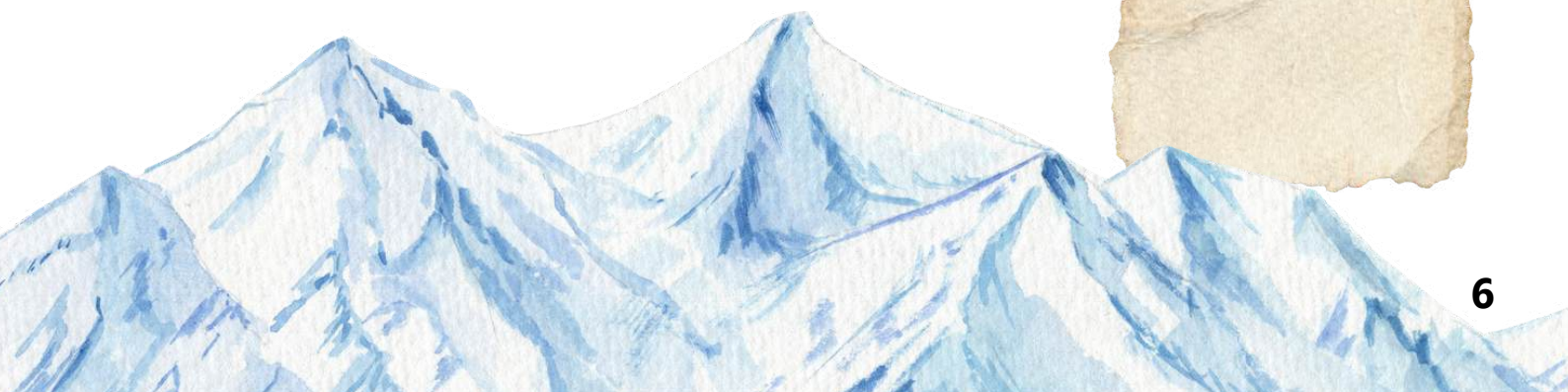
The light at the end of the Tunnel

In January 1959, the Alpe d'Huez Tourist Development Company (SATA) was founded. As soon as the financial credit was granted, construction of the final section to reach the summit of Pic Blanc began. The lift would be operational for the 1962–1963 season.

When the Pic Blanc cable car began operating, one problem remained unresolved: the descent route, which passes by the Sarenne glacier and the eponymous gorges, was very (too) demanding, especially since it forced skiers to carry their skis back up to the village of Huez unless they took the perilous route via the Herpie mine.

Starting altitude :
3 000 m
Arrival altitude :
1 125 m
Vertical Drop : 1 875 m

**Via le Tunnel,
le Belvédère then
Les Rousses, les Chalets
and finally La Fare**



Georges Rajon, a visionary hotel owner from Alpe d'Huez, however had a solution: "all that was needed" was to dig a tunnel through the mountain to reach the Alpe d'Huez slope. This bold idea did not convince the SATA board of directors, but Georges Rajon did not give up. He called in ski champion Émile Allais, who supported the project with the decision-makers. The tunnel will be eventually built!



Barely a month later, excavation began. The project was monumental. It required to dig a 200-meter tunnel and remove of a huge pile of debris. By autumn 1964, the challenge was met: the tunnel was opened. It became accessible to the public in December and immediately enjoyed tremendous success.

« It takes one week and three people to cover the tunnel with snow, using a motorized wheelbarrow »

The Tunnel Slope:
a 70% Incline

WARNING!
Very difficult slope for expert skiers



La Combe Charbonnière

An ungroomed slope with an off-piste, wild feel, that's how most experienced skiers describe La Combe Charbonnière. Starting along the mountainside and then winding into a wide gorge, the run is unusual, with a large rock right in the middle of the valley. South-facing, it remains accessible aside from the steep upper section. It also carries a touch of history: its name comes from a former mining site, whose remains can still be seen today, notably the buildings in the Herpie area. This slope is a true gem!

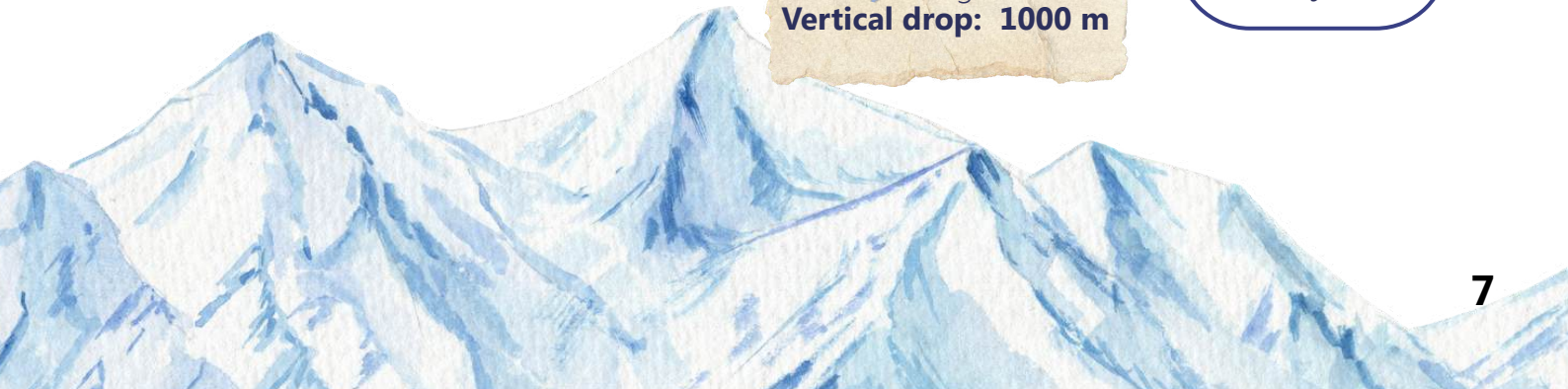
La Brèche

La Brèche shares some similarities with La Combe Charbonnière, as both lie in neighboring gorges. The difference is that La Brèche is even more isolated, far from lifts and main routes. And since it is rarely groomed, it strongly resembles a true off-piste run."

La Brèche →
Secteur Grandes Rousses
Vertical drop: 1130 m

Combe Charbonnière →
Les Bergers
Vertical drop: 1000 m

Underrated Slopes to Discover:
Le déversoir
La Balme
L'Edelweiss
La Vaujaniat



A PERFECT AREA FOR BEGINNERS

The geography of the resort means that the lower part of the ski area offers gentle, wide slopes, ideal for gradual learning. The higher you go in altitude, the more the runs require advanced skiing skills.



36 ski runs



29 ski runs

Beyond the 65 beginner slopes (green and blue), Alpe d'Huez stands out with its fun areas, true pioneers in their kind. The famous Marcel's Farm, created in 2015, has since been joined by Chez Roger and Jacques le Bûcheron.

All three are themed and designed to help beginners, both children and adults, discover the joy of skiing without fear, thanks to playful features that make the slopes less intimidating: whoops, tunnels, slaloms, bumps, photo spots, and figurines!



And if we add the sunny spring days to this equation, we get the ideal formula for beginners, both children and adults

The Advantages of Spring Skiing:

- Less crowded slopes
- Softer snow for gentler falls and slower gliding
- Milder temperatures that make equipment feel lighter

Practical info

Free ski pass for children under 5

Free access for all:

Petit Rif Nel Travelator

École 1 Draglift

Grenouilles Travelator

THE JOY OF SKIING BEYOND BARRIERS

Skiing is often perceived as a sport aimed at those in full physical ability. But at Alpe d'Huez, more and more people with disabilities can be seen on the slopes each year, enjoying the thrill of skiing under the guidance of an ESF instructor. Whether for people with reduced mobility, or with visual, hearing or intellectual impairments, tailored solutions make it possible for everyone to enjoy the unique sensations of skiing.

Jérôme Rieussec, ski instructor at Alpe d'Huez, is one of those who, each winter, are called upon to work with this specific public. "I come from Saint-Hilaire-du-Touvet, home to a specialized rehabilitation center for people with tetraplegia and paraplegia. I started working there as soon as I could and loved the bond of trust that was built with each patient."

"We need to 'tame' each other, to learn how to communicate."

Trust. The key word for Jérôme, who must build with each athlete with a disability a relationship that allows both of them to progress on the slopes in the best possible conditions.

"Especially with blind or visually impaired people, with whom it is necessary to find and implement the most suitable method, we need to 'tame' each other, to learn how to communicate. Voice guidance, the use of a headset, or the use of 2.5 meter parallel bars."



There are many possibilities, and the approach is different for those who already could ski before they became visually impaired. Each winter, the requests are numerous and varied. "We have two types of participants: those who want to learn and improve independently, and those who want to learn to move with the help of an adapted device." To meet these two goals, and also to adapt to everyone's musculature (upper or lower body) in the case of motor disabilities, several tools can be used, all of which require specific training for the instructors. "Depending on the situation, we use the dualski, uniski, kart ski, or tandem ski. We have all of them at the ski school, and several of us are trained to use them."

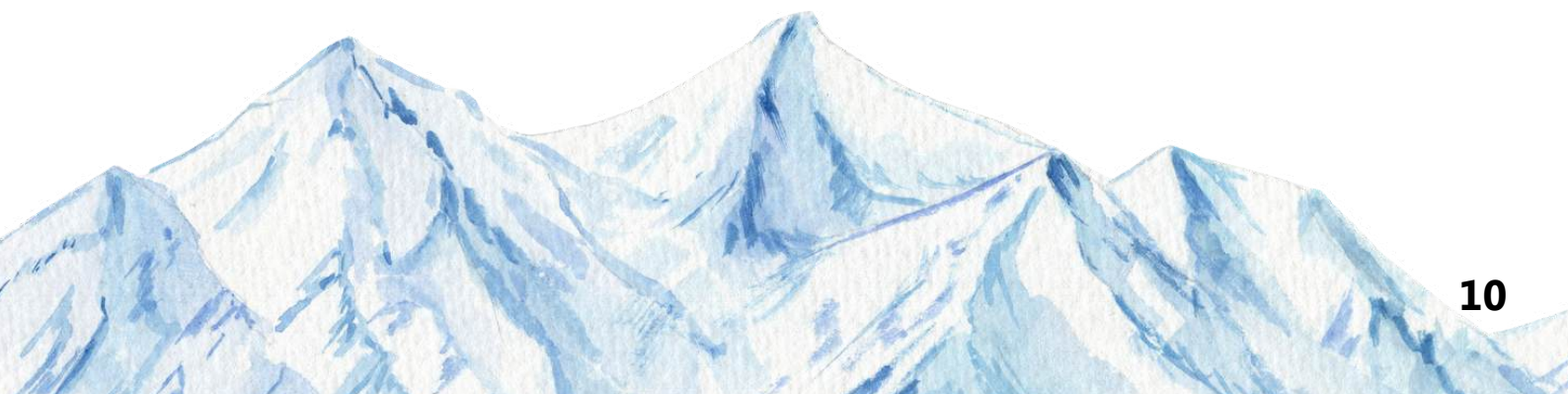
What is it?

“The dualski: It consists of a seat mounted on two parallel skis. The user sits in a bucket-style seat, which is attached to an articulated frame that absorbs shocks and allows leaning into turns, ensuring greater comfort and maneuverability. When fully autonomous, the skier can operate it alone by using stabilizers to manage balance and control direction. When used in tandem, the dualski is equipped with handles at the back, allowing the instructor or companion to control the movements of the seat and brake if necessary.

The kart ski: It consists of a frame mounted on three skis. The skier sits in a seat fixed to this frame, which is equipped with two skis at the front and one ski at the back. The rear ski is used to steer the device, while the two front skis provide stability. It is generally used in tandem with a companion, who guides the equipment from behind using handlebars. This allows control of both speed and direction, while ensuring the skier’s safety.

The tandem ski: It consists of a seat mounted on two skis, similar to the dualski, but with one major difference: it is entirely controlled by a qualified companion. The skier sits securely strapped into the seat, while the companion stands at the back and steers the tandem ski using specific handles. This system allows the companion to control direction, speed, and to brake when necessary.

The uniski: It consists of a bucket-style seat, in which the skier sits, mounted on a single ski. This specially designed ski offers great maneuverability and allows the skier to carve. The skier generally uses stabilizers—small skis mounted on poles—to help maintain balance, control turns, and brake when necessary. The stabilizers also make it possible to get back up after a fall, which encourages independence.



Alexandre Roussel Instructor at ESF and trained in adaptive skiing

*"Working with people with disabilities
is very rewarding;
it makes you feel useful."*



"Depending on each person's abilities, our goal is to give them as much independence as possible so they can set off on the slopes by themselves. I'm often moved by the look on parents' faces when they see their children having such a great time. And since they are closer to the ground than an average skier, the sensation of speed is even stronger! I remember a little blind girl who had so much fun that by the end of the week she wanted to become a ski instructor."

Jules de Rivas In business school and an athlete at heart.

*"The sensations are incredible,
and it's such a real joy for my parents,
my little brother, and me to ski all together!
In winter, we come as often as we can!"*

GOOD TO KNOW

The ski area offers special rates for people with a disability card. Their companion also benefits from a reduced rate.

« I have been disabled since birth; I have spastic diplegia, which puts my nerves to the test. My parents have owned an apartment in Alpe d'Huez for a long time, and at one point, given the situation, they considered selling it. Then we learned that the ESF at the resort had the equipment that would allow me to ski. So I started with the dualski at the age of 9, accompanied by an instructor. By the time I was 15, I was able to ski independently, as I then had the muscle strength to use it on my own."

TOP 5 SNOW ACTIVITIES WITHOUT SKIING

1

Feel like a musher in the heart of the tundra



Mika and his team from [Second Souffle](#) introduce visitors to the joys of dog sledding on different trails depending on snow conditions. He also takes great pleasure in sharing his passion for mushing and the story he has with each dog in the pack. And the magic becomes even stronger when leaving the resort behind to venture into wider, untouched landscapes.



The ultimate thrill with the alpine coaster

This activity includes changes of pace, accelerations, all punctuated by jumps, sequences of rolling waves, chicanes, and flip-flaps.



The mountain kart delights fans of the video game Mario Kart. This little two-wheeled, single-ski vehicle puts the rider close to the ground. Hands on the wide handlebars, mask firmly on the face, helmet on the head... Ready, steady, go!

A real-life video game

Get your balance right with the yooner



It takes a few runs to get the hang of it, find your balance, and extend the right hand toward the snow to handle the turns. But once you've mastered the dynamics, all you want is to outrun your neighbor, and maybe even make him eat snow!



Snow biking

In summer, cyclists tackle the 21 hairpin bends following the Tour de France route. In winter, you can still find yourself on two wheels... but on snow, with the [Fat E-Bike](#), an electric-assist bike equipped with extra-wide tires.

DISCOVER THE HISTORY OF THE SKI RESORT

The Huez municipality wanted to present an exhibition at the museum of history and archaeology tracing the tourist and urban development of the Alpe d'Huez resort. Four historical and thematic cubes highlight this remarkable growth, showing how the old summer barn-chalets of the Vieil Alpe were transformed into hotels for skiers from the 1920s onward, leading to the emergence of an international resort by the 1980s. Current environmental challenges are also addressed in the exhibition.

Visitors can also sit in two restored Chalvet chairlifts and watch three archive films showcasing the 1950s and 1970s, highlighting the role of property developers and the installation of the new Pic Blanc cable car (3,330 m) in 1963.



In this new exhibition, museum visitors can interact with a touchscreen table displaying a 3D model of the resort's urban development, from the 1920s up to projected plans for the 2040s.



Walking through Alpe d'Huez today, who could imagine that in the Middle Ages, a community of men, women, and children settled on the Brandes plateau to extract silver ore from the mountains at over 1,800 meters above sea level? Yet from the 12th to the 14th century, the inhabitants of Brandes village (the highest village in Europe at the time) lived there year-round despite harsh climatic conditions. This human story was revealed by archaeological excavations that began in 1977, led by M.C. Bailly-Maître and his teams. The discoveries made during these excavations paved the way for the creation of the Museum of History and Archaeology.

The museum offers guided tours on themes related to the resort's heritage, architecture, and history.

€5 per person.

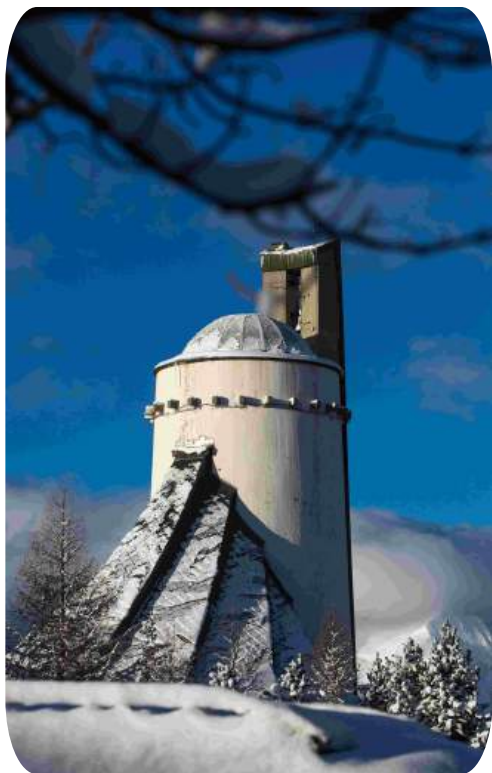
Booking: 00 33 4 76 11 21 74.



Interactive kiosk

At the museum, a life-size interactive terminal allows visitors to listen to several witnesses describing their favorite building and their life in this high-altitude town

Not Just a Church



Organ concerts take place every Thursday evening, organized by the [Notre-Dame des Neiges association](#). They feature the world's finest organists, as well as several orchestras throughout the year.

At first glance, no one thinks, 'What a beautiful church!' Its unusual Berber tent shaped architecture raises questions. Don't look for a nave or a transept, you won't find them. Inspired by the works of Le Corbusier, the church was built between 1968 and 1970 to replace the old small wooden chapel, using simple materials such as concrete, copper, and glass.

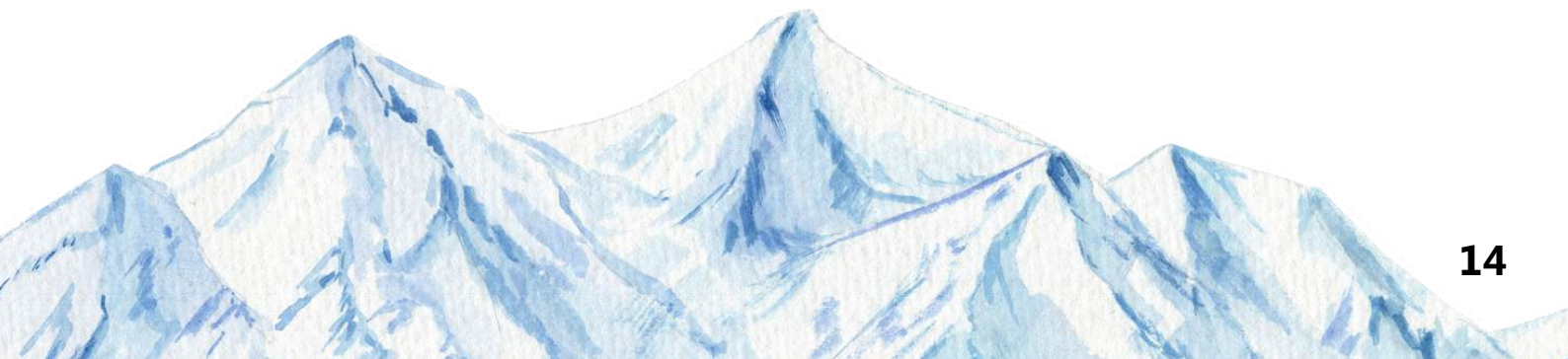
Architect Jean Marol primarily aimed to create a decidedly modern space with a dual purpose: liturgical and cultural. The building is surrounded by stained glass windows by Arcabas and crowned by an open-palm hand over the choir, crafted by organ builder Detlef Kleuker based on plans by Jean Guillou, the organist of Saint-Eustache in Paris.

The organ pipes, comprising 24 stops, are housed within the fingers of this hand. Around this shaft of light, this hand pointing to the sky, the congregation sits in a circle, gathering as if around a campfire...



The little anecdote

From its construction in 1970 under the initiative of Father Jaap Reuten, this gathering place, both a place of worship (the crypt) and a cultural center, has hosted fashion shows, boxing matches, children's performances, concerts, and even a bar. The priest had signed a partnership with Heineken to serve beer in the church, but that wasn't all: every business in Alpe d'Huez selling this beer at the time had to contribute a percentage to the parish. Very recently, the Tomorrowland Winter festival held a DJ set in the church choir in front of 500 festival-goers.



A THRILL OF ADRENALINE

A new perspective on the mountains from the sky



The sensation of flying like a bird and enjoying complete freedom in the air, that's what paragliding offers. It's the perfect opportunity to experience the joy of tandem flight amid stunning snowy landscapes. Learning to steer a paraglider means taking off from the Signal at 2,108 meters and landing at its base (ideal for a first flight), or launching from much higher altitudes. The scenery includes snow-covered peaks, the resort, the slopes, and the Écrins... a landscape revealed from an entirely new perspective.

Ice climbing, a once in a lifetime experience

Ice climbing is often imagined as inaccessible, the privilege of the most adventurous and experienced mountaineers... Yet the Alpe d'Huez Mountain Guide Office thinks differently! Keen to introduce people to the mountains and their activities, they offer beginner sessions on ice climbing. For this, head to the Fare Icefall: a true natural gem, this frozen wall is located in a peaceful and preserved area. Access is gained by ski touring from the Pic Blanc gondola, gradually immersing participants in the world of mountaineering.

After an hour of effort, climbers reach the icefall and can safely try out crampons and ice axes. Ski touring, climbing, rappelling, and skiing back down: this is the exciting program for the day.



Private guide (for 1 à 4 people)

€450

Group trip

€150/person

RELAX MAX

Experience the mountains differently

A unique concept developed and practiced exclusively by Grandes Rousses Hotel & Spa in Alpe d'Huez, Alpinotherapy® invites you to experience exclusive wellness while discovering the benefits of the mountains.

Alpinotherapy® was born at 1,830 meters above sea level, in the heart of Alpe d'Huez. This exclusive concept draws inspiration from the well-known practices of thalassotherapy at the sea, adapted to the mountains. It focuses on five fundamental elements: altitude, cold, light, minerals, and plants. Making the most of a territory rich in flora and minerals, Alpinotherapy® uses the natural resources of Oisans to offer a unique wellness experience.



Combined with physical and spiritual activities in the alpine pastures of Alpe d'Huez for a reconnection with nature, and with body therapies including massage, oligotherapy, and cryotherapy, these resources amplify the benefits of a mountain stay. The aim is to rebalance the body's trace element levels to prevent, repair, and protect against our oxidative environment.



Between starry sky and igloo

A dinner in an igloo. After a short night-time snowshoe walk with Clément, a mountain guide, you get to an authentic igloo. Settling into this cozy shelter, enjoy an aperitif under the stars, wrapped in warm blankets, followed by a traditional cheese fondue. Night starry sky and outer space observation time is scheduled if weather is good enough.



Departure: 06.30pm
Duration: 3h30 (1h30 walking)
Distance : 4km
Price: €80 / person

Snow yoga

A meeting is set with a yoga instructor for an outdoor session amid a stunning panorama, feet in the snow! Laura teaches Vinyasa yoga, an energetic practice based on movement, harmonized and guided by breath. 'My love for the mountains and movement brings me to teach outdoors. It's the perfect way to highlight the benefits of practicing at altitude, up to 2,700 meters.' The list of benefits is long: disconnection, sensory stimulation, stress relief, flexibility, better oxygenation... She also offers parent-child and children's yoga sessions upon request!



Snowshoeing: a serene way to explore

Looking for calm, tranquility, and a gentle way to experience the mountains, taking time to observe and listen? Snowshoe outings offered by the Alpe d'Huez Mountain Guide Office provide a different approach to the mountains, focusing on contemplation, observation, local history, and heritage. Col de Poutran, Gorges de Sarenne, Crêtes d'Huez, Plateau de la Rochette, Forêt d'Oz, Lac Blanc, Lac Noir... so many spots to discover and appreciate in silence.

Half-day rate: €190

Full-day rate: €325

The Alpe d'Huez area features **35 km of marked** groomed, and safe walking trails. For added comfort and to enjoy the panoramas, benches and tables are placed along the paths. Thanks to gondolas and cable cars, visitors can explore the heights and iconic spots of the Alpe d'Huez domain: Pic Blanc, Alpette, Dôme des Rousses, the lake loop, Auris-en-Oisans, and Villard Reculas...

The palace of 1,001 adventures

AgorAlp (formerly the Palais des Sports et des Congrès) offers a wide range of activities for all ages and interests: game room, ping pong, tennis, indoor and outdoor swimming pools, squash, giant chess, fitness room, escape games, supervised classes, mini golf, climbing...

CAPRICIOUS WEATHER? NO PROBLEM!

The Palace of 1,001 Adventures

The AgorAlp (formerly the Sports and Congress Palace) offers a range of activities for all tastes and ages: game room, ping pong, tennis, indoor and outdoor swimming pools, squash, giant chess, gym, escape game, supervised classes, mini-golf, climbing... It has become the go-to meeting point for everyone to move from one activity to another when the weather isn't ideal.



Emparis room, a paradise for kids

The recently opened extension of AgorAlp offers a space entirely dedicated to children. Accessible up to the age of 6, it features around ten age-appropriate modules: manipulative and motor skills games, climbing structures, a reading corner, giant blocks... Every child can find something to develop their motor skills and curiosity, enjoying a moment of freedom in complete safety. Price: €5. Free for children under 1 year old.

Six escape games for a unique escape experience



Alpe d'Huez doesn't just have one, but six escape games, each with a different theme and suitable for all groups, located right within AgorAlp. Sessions range from 20 minutes to 1 hour, offering plenty of choice. It's the perfect activity for unpredictable weather, at the end of the day before dinner, or afterwards as it is open until 8 p.m. (and sometimes later). The two main escape games, each lasting an hour, are inspired by true stories: one set in 1944 in the heart of the Oisans Resistance, and the other in February 1950 inside the Herpie Mine. These escape games deliver adrenaline, tension, and the thrill of finding your way out.



NEW!

This winter, a new escape room will make its debut. 'Ski Room,' makes way for '**Off-Piste**,' themed around the 1968 Winter Olympics bobsleigh event.



Short on time? Three 20-minute escape games take you through three different worlds: a museum heist, a gold medal to recover, and curses to unravel.

NEW!

A picnic room to relax in complete tranquility

This new 'picnic room' of 100 sqm is located at the top of the first section of the Pic Blanc gondola. Equipped with a kitchenette including a microwave, a dining area, a terrace with a view, and family-friendly restrooms, it's the perfect place to take a break during a day of skiing, hiking, or between sledding sessions.



A flurry of books!

Novels, comics, children's books, DVDs, non-fiction, magazines... The Alpe d'Huez library boasts a collection of 17,000 items, including the latest releases from major publishers. Visitors can read on site, borrow books (€5 per week), and even borrow board games through the local library network. Nathalie, the librarian in charge, also organizes live performances throughout the winter!



A moment of relaxation together

It's not just parents who need to relax, children deserve their own suspended moment too. The Ô des Cimes spa at the CGH residence offers a parent-child duo massage. In a captivating bubble scented with honey and vanilla, moments of connection and serenity take center stage. Children can also enjoy treatments on their own, including a scalp massage called 'Sweet Dream,' a pampering cotton candy facial, or the 'Rest for Princes and Princesses'.

The COOL zone

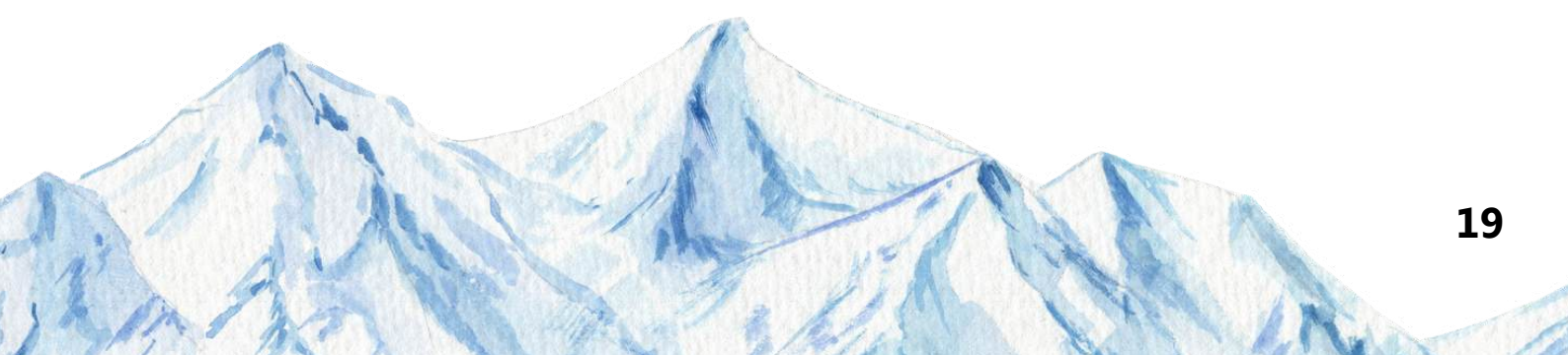


With giant poufs and DMC cabins repurposed as covered areas to relax or have a picnic, the 'cool zone' is the perfect spot to chill, rest your legs, and plan your next runs.



An indoor adventure trail

At AgorAlp, when you look up, it's not uncommon to see small figures climbing eight meters high in the nets, moving from one sausage to another, from a tube to a scooter balanced on a wire, and then on to the knotted ropes. And if you want to continue, you can follow up with a climbing lesson or explore the bouldering area (from age 13).



An ephemeral ice cave



For the past 26 years, the Ice Cave of Alpe d'Huez, an artificial creation at an altitude of 2,700 meters, has been showcasing its finest features across a 120-meter gallery with around thirty sculptures, offering visitors a magical and enchanting snowy spectacle. Last winter, the team of sculptors worked on the theme of the Vikings! And this winter, it is time for an African Safari !

"It is an artificial snow cave that we create at the beginning of winter. We build it using snow machines. Once the 10,000 cubic meters of snow are gathered, the snow is projected onto inflatable molds and left to harden. The molds are then deflated, revealing the main structure of the cave, the galleries, rooms, and igloos. Then, diggers and shovelers prepare the blocks for the dozen sculptors who bring the cave to life." According to Bernard Lambolez, high-mountain guide and initiator of the project, it takes about one week to set everything up.



Each year, a different theme: Ancient Greece, the sea, the war of fire, La Fontaine's fables, abstract art, the Inuits, the Incas... A wealth of influences, worlds to explore, and cultures to sculpt and showcase. For the ten or so artists involved each year, the canvas becomes a block of snow, and the paintbrush is replaced by chisels and saws.

Prices

Adult: €5.50

Kids (ages 5 - 12): €4.50

Ascent to 3300 m + cave entrance
Adult €24 / Enfant (ages 5 - 12): €20,50.

SEEKING SILENCE

Strolling along the frozen lakes



In summer, the loop of lakes is a must-see, with its trail winding from one stretch of water to the next, accompanied by the whistling of marmots and blueberries within easy reach. In winter, the magic is still very much there, though of a different kind, with a landscape transformed, draped in white, pristine and cottony. The lakes are frozen and blanketed with snow, and beside them a groomed and marked footpath leads upward toward the Alpette. The place is secluded, set apart from the ski area and the resort. Here, silence is golden.

It can be reached from the resort via a marked footpath, or by taking the Pic Blanc gondola up to 2,100 meters to shorten the distance. Sturdy hiking boots or snowshoes (available for rent in the resort) are essential.



It is also possible to go lower in altitude to the Sarenne Gorges. Starting from Huez Village, the trail winds through woodland along the Sarenne river. The path goes by near the Roman bridge and old watermills, offering a more heritage-rich section of the route.



Gourmet tip

At the end of the hike, the Chalet du Lac Besson is the perfect spot for a snack break with a "Montagnard" hot chocolate. This local drink is enriched with a few drops of green Chartreuse, the famous Alpine liqueur. Original and full of flavor, the so-called "Green Chaud" is the ideal alternative for those who prefer something with a stronger kick.



ACT TODAY FOR TOMORROW



The origins of Alpe d'Huez date back to 1936, for the inauguration of the first Pomagalski ski lift. Since then, skiing has continued to attract more and more enthusiasts, from 1,860 meters in the heart of the resort up to the summit of the Pic Blanc at 3,330 meters. An activity that has evolved, expanded, and adapted in response to an ever-changing economic and tourist landscape. Today, this context has shifted once again, bringing with it new questions, including those raised by climate change.

Even though Alpe d'Huez, thanks to its altitude, is guaranteed reliable snow coverage for the next 30 years (according to scientific data from the Intergovernmental Panel on Climate Change), it is now time to imagine a new model for the future, one that will sustain the resort's vitality and ensure the continuity of year-round life (with 53% of mountain jobs being tourism-related). To achieve this, the town hall, the Alpe d'Huez Tourist Office, SATA (the ski lift company), together with residents and local shopkeepers, are committing to five key and concrete initiatives:

Altitude 3300 project

Since 2020 and running until 2027, the Alpe d'Huez ski area has been undertaking a major transformation through an ambitious project to modernize its infrastructure. The main goal is to replace several ski lifts in order to create a smooth and intelligent connection between all the resorts of the ski area (Villard Reculas, Oz-en-Oisans, Vaujany, Alpe d'Huez, Auris). This will improve mobility, open up the territory, and make access to higher altitudes easier.

In the long run, for instance, it will be possible to travel more easily from Auris-en-Oisans to Vaujany without needing to use a car. The project is also part of a broader ambition to provide an accessible and inclusive experience for all: skiers, pedestrians, mountain bikers, people with reduced mobility, as well as holidaymakers and residents. The aim is to expand uses and diversify activities, both in summer and winter, in order to promote year-round tourism in Alpe d'Huez.



The signing of the charter “Zero Wild Waste in the Mountains by 2030”:

For more than 20 years, the Mountain Riders association has been collecting waste in the mountains. Two decades later, the conclusion is undeniable: waste is still being picked up. Today, the ambition is clear, zero wild waste in our mountains by 2030. To achieve this, many mountain stakeholders have decided to sign this charter and set out an action plan built around three priorities:



Reduce (zero cigarette butts left behind, restaurants using zero single-use packaging, putting an end to construction site littering...)



Raise Awareness (displaying messages explaining the impact, supporting local businesses and professionals in their efforts...)



Collect and Assess (categorize the waste...)



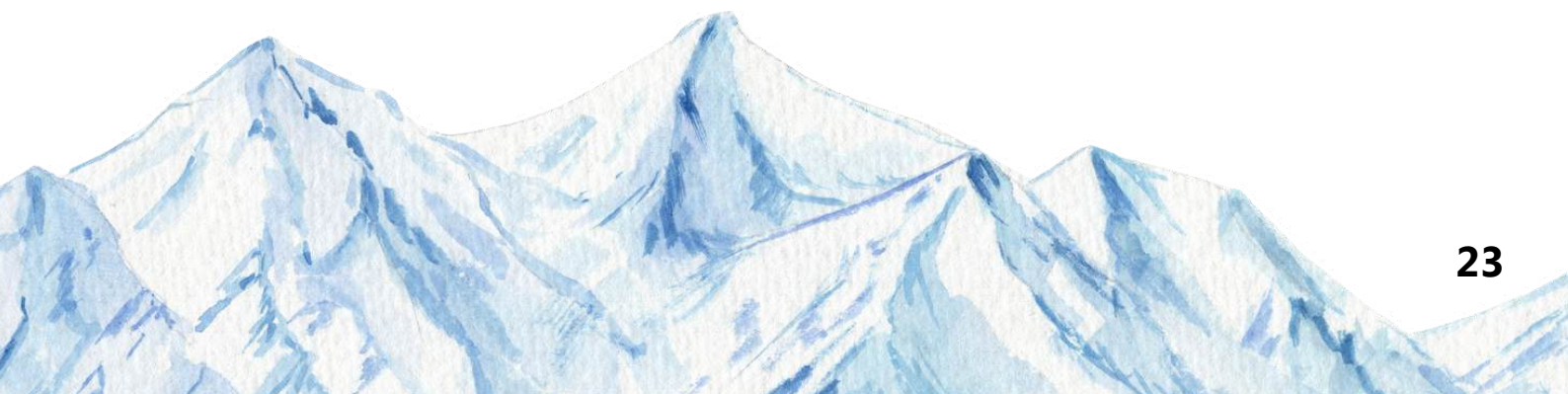
Did you know?

At the end of each season (winter and summer) for the past twenty years, residents and professionals of Alpe d'Huez have carried out a clean-up of the town center and the surrounding alpine pastures. Each year, around 1.2 tons of waste are collected. Among the most common items are cigarette butts, but also more unusual objects such as car chains, construction signs, ski poles, and even skis.



Towards Flocon vert Certification

This is a labeling initiative that guarantees the long-term commitment of mountain tourist destinations. Developed by the Mountain Riders association, it supports regions in their transition and provides mountain enthusiasts with a clear, long-term vision of the destination. Through a diagnostic phase and numerous workshops open to everyone, it fosters true co-creation around 20 thematic criteria, including sustainable economy, governance and resilience, resource management, and social and cultural dynamics.





Assess the carbon footprint

Since the beginning of the year, Alpe d'Huez has been working with Take Air to establish its carbon footprint and its climate strategy. Four months were required to collect data across the entire destination. To do so, shopkeepers, residents, visitors, the tourist office, the town hall, and the ski lift company (SATA) were surveyed on various aspects: transportation, energy consumption, eating habits, supplier origins, and more. Unsurprisingly, the carbon footprint is far from exemplary, leaving significant room for improvement.

196,175 tonnes of CO₂

for the fiscal year
from 01/01/2023 to 31/12/2023

Which corresponds to:

- the annual emissions of **19,816 French people**
- **32,218 trips around the Earth** by plane
- burning **63,282,258 liters of diesel**

Travel represents

80%

of the carbon footprint

With a view to obtaining the Flocon vert certification, and in order to reduce our carbon footprint and shape the future of Alpe d'Huez, several working groups will focus on six different themes: waste, local life, heritage, property owners, procurement, and resources, aiming to turn actions into concrete results and foster citizen engagement.

Property owners' partnership

On average, owners of second homes in Alpe d'Huez occupy their properties for just under six weeks per year. With a view to revitalizing this housing stock, reducing thermal bridging, and renovating buildings and apartments, the municipality is currently developing a program for property owners. The goal is to support those who wish to participate in a win-win approach, benefiting both the owners and the resort.



AGENDA

Sea and mountain film festival

From December 15 to 19, 2025



Fifteen teams, each made up of a sailor and a mountaineer, will compete from December 15 to 19 in the Mer Montagne Trophy. The champions face off in a friendly spirit across a variety of challenges. It's an opportunity for these adventurers to share their passion for waves and peaks while supporting a charity. During their visit, the participants showcase to the public a selection of adventure films, each more breathtaking than the other, with screenings preceded by talks.

Comedy film festival

From January 19 to 25, 2026

A week dedicated to comedy and laughter. The popular cinema genre that everyone loves! Established as a benchmark in its field, the Alpe d'Huez International Comedy Film Festival has, since 1997, brought together box office hits, hidden gems, and short films on the big screen. Expect plenty of laughter and good vibes! The unmissable highlight? Freepreview showings subject to available seats.



Tomorrowland, the Belgian giant thrills the resort

From March 21 to 28, 2026

The world's top DJs gather at Alpe d'Huez for the sixth edition of Tomorrowland Winter, spanning the heart of the resort and the ski area. The world's biggest electronic music festival returns even bigger, with an all-new lineup and exciting surprises, guaranteed to dazzle your eyes and thrill your ears.

Comics festival

From April 10 to 12, 2026

Co-organized with Glénat Publishing, the Alpe d'Huez Comic Book Festival transforms the Sunny Island into the Island of Bubbles, for a new encounter between the mountains and comic book authors-illustrators, with book signings, workshops, and animated films.





alpe*huez

**SEE YOU
THIS SUMMER!**

PRESSE CONTACT
Laura Heurteloup - Peggy Hille
presse@alpedhuez.com - p.hille@alpedhuez.com
00 33 6 14 30 12 79 - 00 33 4 76 11 59 95